

# FM+B<sup>SM</sup>

Extended Life Drums

Fully Machined & Balanced



**THE FUTURE  
OF PREMIUM BRAKE DRUMS**

**OTR**  
PREMIUM BRAKE PRODUCTS

**FM+B<sup>SM</sup>**

**Unique Design Feature:**

FM+B<sup>SM</sup> drums have both the inside and outside diameter precision machined for uniformity.

**Benefits:**

- Surface temperatures are more evenly distributed eliminating hot spots for extended drum and lining life, up to two times conventional cast drum life.
- This process results in uniform thermal expansion during braking, which minimizes brake “judder” and vibration.
- Machining both the inside and outside diameter eliminates the need for a balance cut, improving overall drum strength.

Up to 2x  
Drum &  
Lining Life



Both inside and outside diameter of brake drum is fully machined.

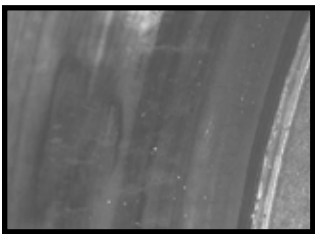
# Today's Conventional Cast Drums



Outside diameter of brake drum is "as cast." Only the inside diameter is machined, which requires a balance cut.

Conventional brake drums have only the inside diameter machined. The outside diameter remains "as cast". **The disadvantages are:**

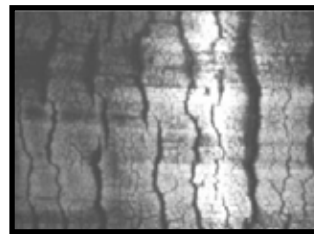
- Because the outside diameter is not machined, wall thickness varies and cannot provide uniform thermal expansion during braking. This can result in excessive vibration (brake "judder") and heat checking.
- To balance a conventional drum, a balance cut is made, which can weaken the brake drum and does not address the issue of non-uniform thermal expansion.
- Conditions resulting from non-uniform thermal expansion during constant heating and cooling from brake applications.



Heat Spotting



Heat Cracks



Heat Checking



Out of Round  
Oversize



## Fully Machined & Balanced

- Improved heat transfer for cooler drums and linings.
- Extended life vs conventional cast: provides up to 2 times drum and lining life.
- Improved dimensional consistency.
- "Turned to Balance" for a stronger product.
- Improved durability with improved roundness.



PN	Brake Size	Bolt Holes & Size	Bolt Circle Diameter	Pilot Diameter	Overall Depth	Weight	Max Axle Load Rating
OTR2501B	15 x 4	10 - 1.35	11.25	8.78	9.18	80 lbs.	14,000 lbs.
OTR2601B	16.5 x 7	10 - 1.10	11.25	8.78	10.60	112 lbs.	27,000 lbs.



Made in the USA