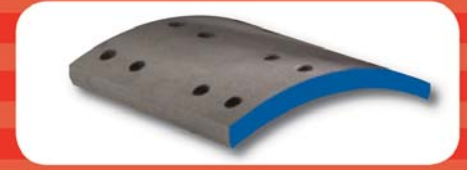


OTR

BLUE



P/N: FM051343

When economy grade lining is not enough. . .

Economy and standard grade linings with 18,000 lb. or 20,000 lb. ratings have only one benefit, lowest initial price. These mixes are developed to pass the minimum standards with little focus on product life, especially the 18,000 lb. rated products. This leads to major performance issues:

- Their typical operating temperatures are at the bottom of the scale. So if this equipment travels hills or mountains, hauls heavy loads or has frequent duty cycles, it will have short life and longer fade recovery.
- Some of these products fail FMVSS121 testing. Of those that pass, most only pass @ 180 AL factor, not 165. This means they can be used on most trailer applications where 6" slack length is the norm but should not be used on most tractor applications where 5.5" slack length is the norm. Why the testing failures and higher AL factor? These products lack the brake power.

OTR has the solution, a premium 20,000 lb. material

A few of our fleet customers said it best:

Bob Phipps – Director Of Maintenance – Bettendorf Trucking, Arcata, California

Bettendorf Trucking has been using OTR Blue as our standard brake lining choice for all of our 120 tractors and 336 trailer units for four years. We are primarily a forest byproducts hauler running high duty cycles with maximum weights over the roads of northern California and western Oregon. We run around the clock over mountain grades in all sorts of weather conditions. OTR Blue has proved to deliver a good combination of performance, consistency, and braking balance resulting in an overall good cost-per-mile for our wide range of vehicles. It gives us dependable vehicle control and stopping power without excess wear on drums and other brake components. We tried an experiment with an advertised "premium" lining with a result that our cost-per-mile actually increased without benefit of increased performance or durability. That test reinforced our decision that OTR Blue was our best choice for our operation. The practice of technicians doing a good brake job, reinforcing good operation practices with our drivers, and OTR Blue lining has proved to be a winning combination.

Jerry Johnson – Shop Foreman – US Transport, Farmington, NM

We run fully loaded in both directions, some over the road and also the severe terrain of off-road oil fields. OTR Blue holds up to the heat the best of any friction we've tried. It also delivers good stopability with no increase to drum wear.

Brandon Godfirnon – Fleet Manager – Twiss Transport, Inc, Largo, FL

I'm writing you to express my satisfaction with the OTR Blue brake shoes we've been purchasing from FleetPride. We're seeing longer intervals between brake jobs vs the OEM brakes we've had to replace. There's been no complaints from drivers about stopping power either. Overall we're very happy with the OTR Blue brakes and have no plans of switching any time soon.



- Thrives in brake temperatures 30% higher than economy and standard linings.
- A unique combination of raw materials that delivers great mileage and drum wear in 20,000 lb. applications.
- Consistent braking power in 20,000 lb. applications with moderate to heavy duty cycles.

OTR FRICTION is the SMART choice
because there's NO TIME FOR DOWNTIME.